

Page

4

BODYWORK

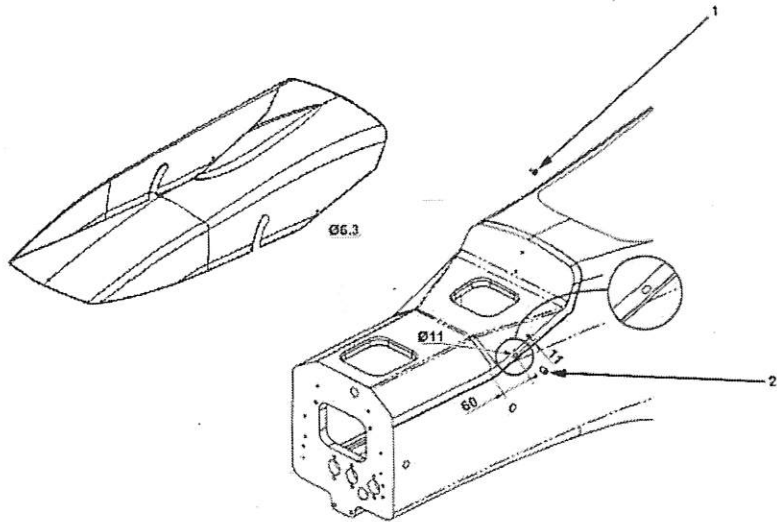
Authorised modifications40-1
Ballast40-3
Bodywork, wings and bow40-4

FRONT BONNET

It is authorised to add an additional, identical fastener to the other fasteners on the front bonnet.

NOTA: Observe dimensions shown on figure.

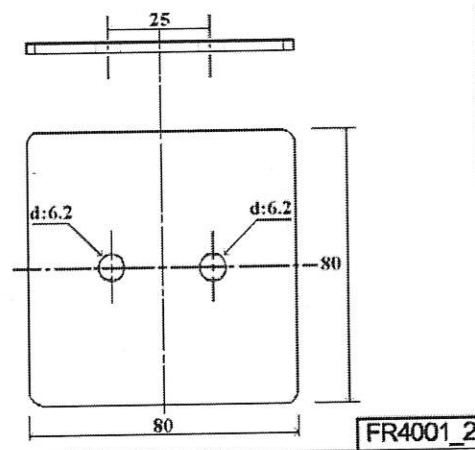
- Drill an 11mm diameter hole in the body shell.
- Slightly bevel for gluing.
- Apply Araldite glue. Install receptacle (2) in hole.
- Drill a 6.3mm hole in the bonnet. Install Camloc (1).



FLAT BOTTOM / EXTRACTOR

To respect the article 3.13 of the technical regulation, it is authorised to add between the aerodynamic extractor and the support of the pad a metallic spacer plate following the sheet here on the right.

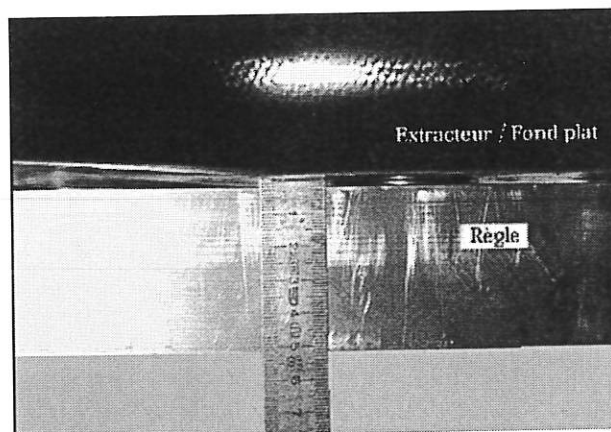
The thickness permitted the location of the aerodynamic extractor to be in line with the reference flat bottom.



CHECKING PROCEDURE

Position a ruler under the flat bottom (reference plane) in the longitudinal plane of the vehicle by placing it near the pad and measure the distance between the ruler and the flat bottom.

If the distance is more than 5mm (0.197in), it is compulsory to set up a shim between the pad and the gearbox to respect the regulation.



You will find below precisions on the technical regulations

GROUND-FACING BODYWORK

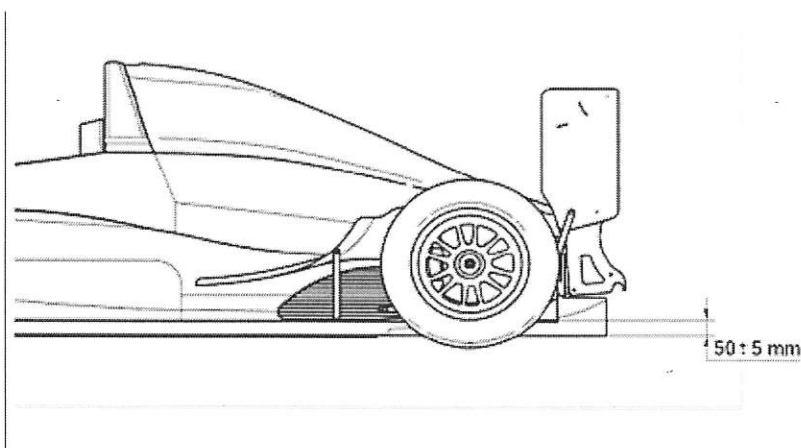
Between the furthest-rear edge of the complete front wheels and the furthest-forward edge of the complete rear wheels, all suspended parts of the car visible from below must be located on one of the following two parallel planes: the reference plane or the step plane.

Reference plane: surface between the furthest-rear edge of the complete front wheels and the furthest-forward edge of the complete rear wheels with a maximum width of 500mm symmetrical to the longitudinal axis of the car.

Step plane: all suspended parts of the car visible from below and not in the reference plane, must be positioned 50mm above the reference plane.

IMPORTANT: No part of the car must be positioned more than 50cm to the rear of the rear wheel axis, or more than 100cm to the front of the front wheel axis.

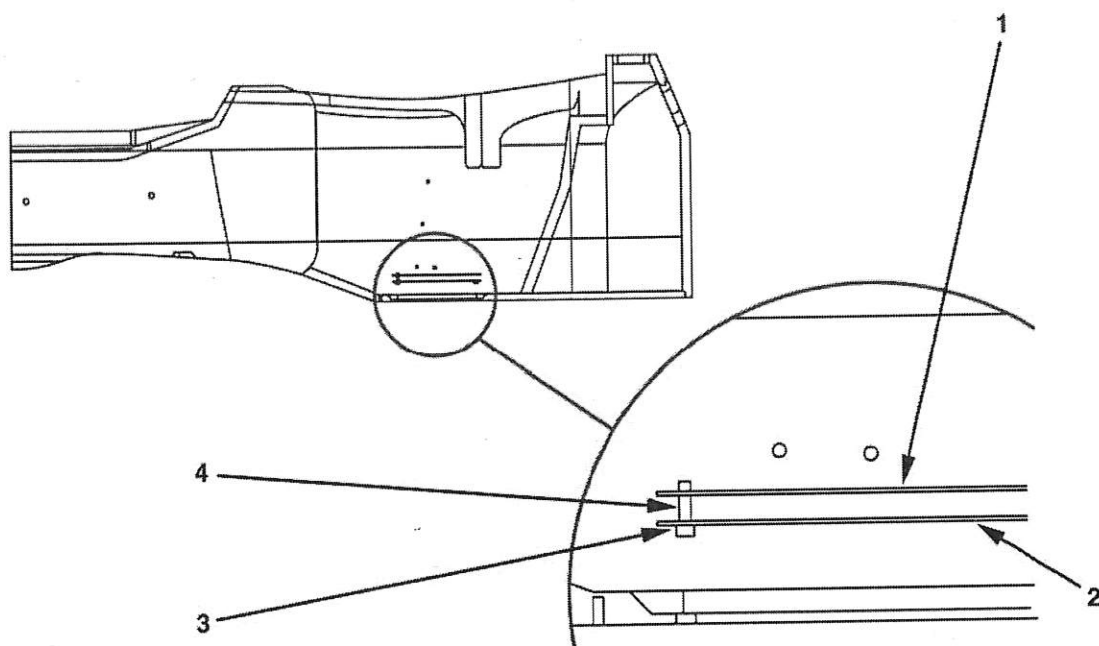
IMPORTANT: Rear diffuser: a tolerance of $\pm 5\text{mm}$ is granted on the relative position of the extension of the step plane on the further rear edge of the diffuser with regard to the reference plane (see drawing below). This adjustment can be obtained by adding washers or shims between the stay main plate / diffuser (part 01 03 02 060/061) and the diffuser



In order to respect the regulation with regard to the minimum weight of the vehicle, ballast plates specific to the FR 2.0 are available in the Renault Sport equipment store - Ref : 77 11 154 298.

ASSEMBLY OF BALLAST PLATES

- Fit bottom plate (2). Align it with edges of body shell sunk spot.
- Use bottom plate (2) as gauge to drill body shell.
- Drill four holes for inserts (3) and 3.2mm dia. holes for rivets.
- Run sandpaper over body shell and bottom plate sections to be glued.
- Glue bottom plate (2) onto body shell using Scotch 3M Wild 9323 a/b resin, then fasten it with rivets.
- Screw the four studs (4) onto the inserts (3).
- Adjust their length as a function of the ballast thickness.
- Assemble top plate (1).
- Drill end of studs so sealing can be applied.



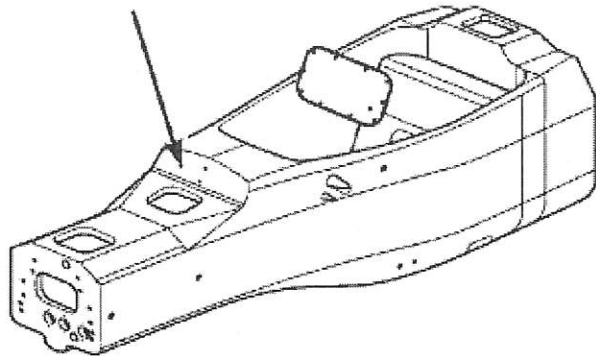
MARKING

All parts making up the bodywork, wings and bow are marked with hologram discs.

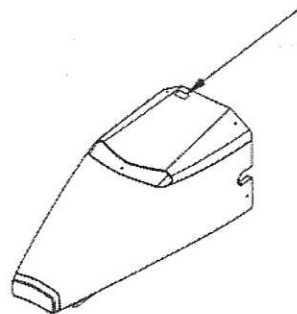
It is compulsory that they be present and that they be visible.

Contestants are in charge of the condition of discs. The arrows in the figures opposite show the location of the discs.

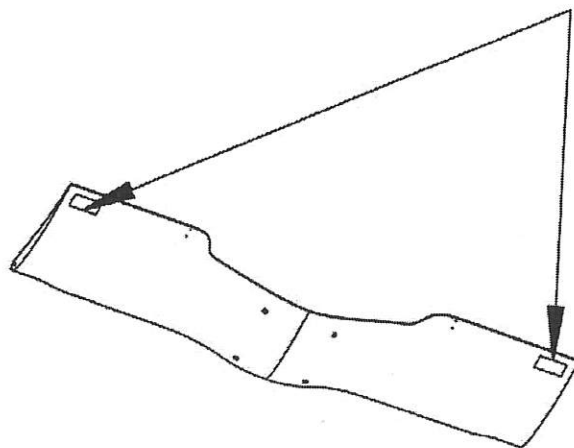
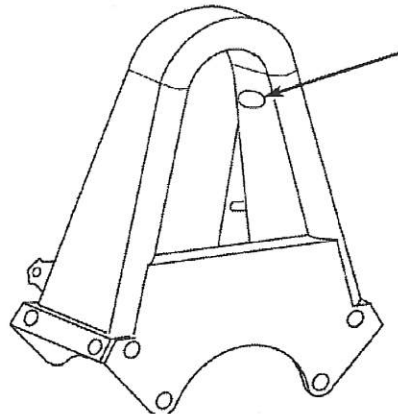
- Frame 77 11 154 350
- (1 disc).
- Nose 77 11 163 071
- (1 disc).



- Roll hoop 77 11 154 352
- (1 disc).



- Front wing 77 11 163 090
- (1 disc per component).

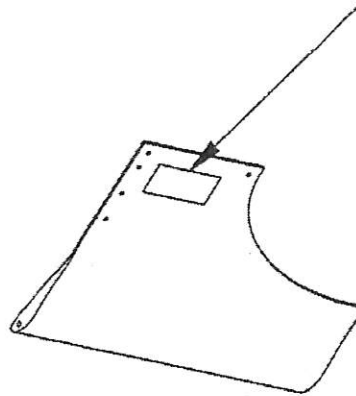


BODYWORK

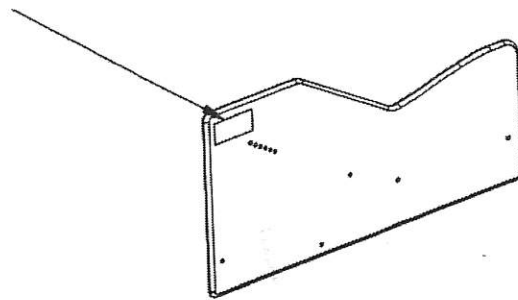
Bodywork, wings and bow

40

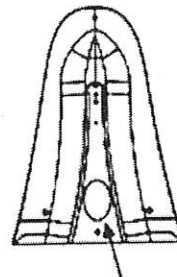
- Front wing flaps 77 11 163 079 / 080
- (1 disc per flap).



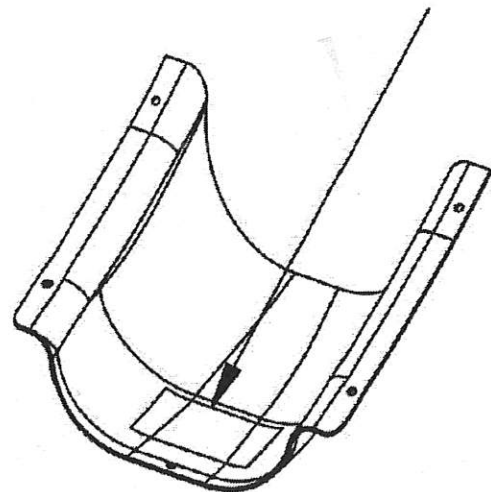
- Front wing sideplate 77 11 163 072 / 084
- (1 disc per sideplate).



- Front splashguard 77 11 163 096
- (1 disc).



- Rear floor cup 77 11 163 099
- (1 disc).

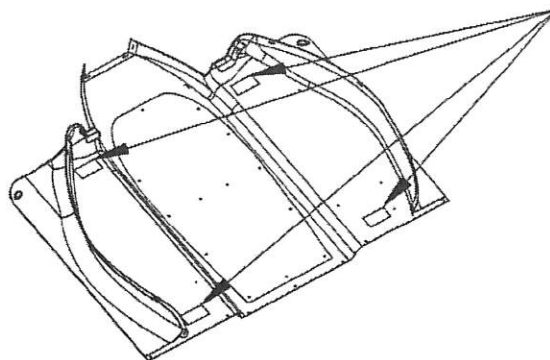


BODYWORK

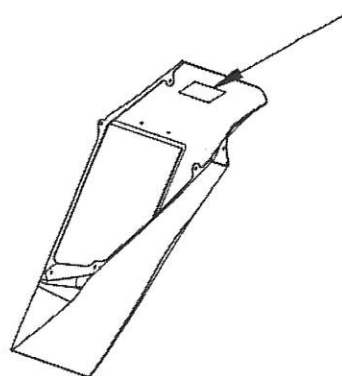
Bodywork, wings and bow

40

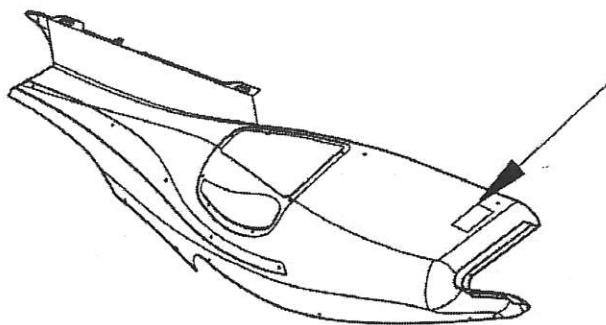
- Front floor 77 11 163 097
- (4 discs).



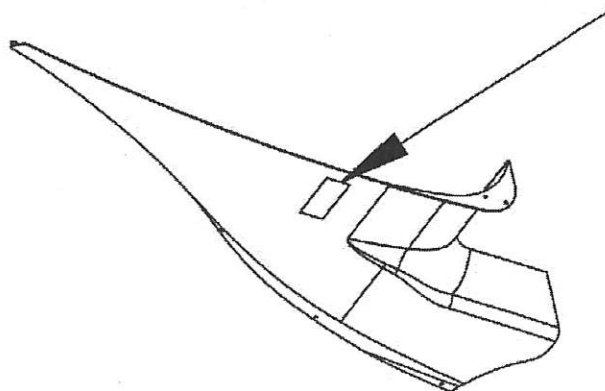
- Radiator ducts 77 11 163 107 / 108
- (1 disc on each mounting).



- Side pod 77 11 163 109 / 110
- (1 disc on side pod).



- Tyre ramp 77 11 163 113 / 114
- (1 disc on each splashguard).

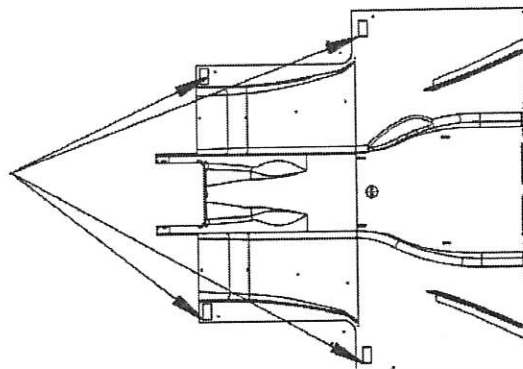


BODYWORK

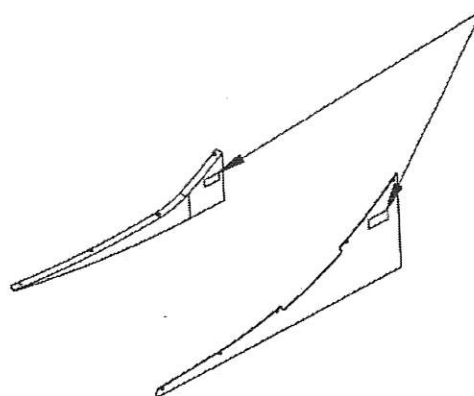
Bodywork, wings and bow

40

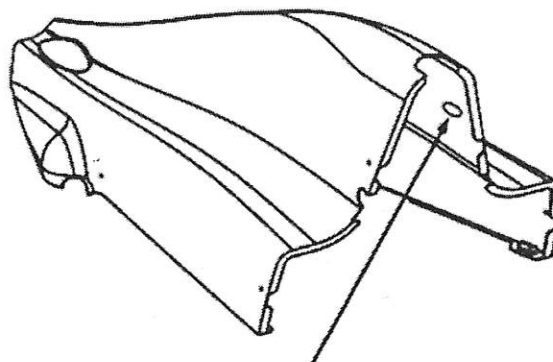
- Rear floor 77 11 163 098
- (4 discs).



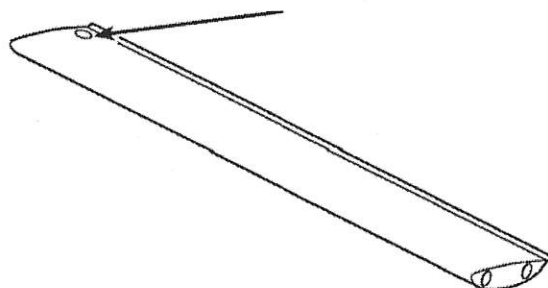
- Rear floor crosswind deviation 77 11 163 100 / 101 / 102
- (1 disc per crosswind deviation).



- Engine cover 77 11 154 836
- (1 disc).



- Rear wing 77 11 154 429 / 433 / 426
- (1 disc per wing).

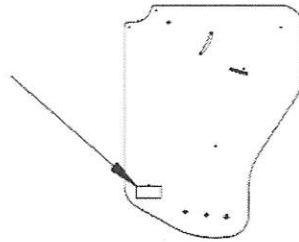


BODYWORK

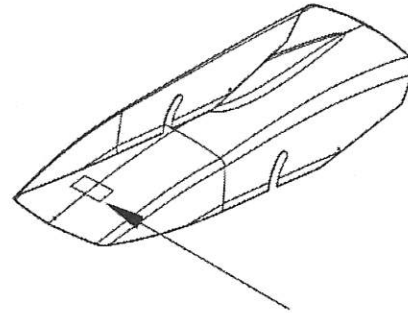
Bodywork, wings and bow

40

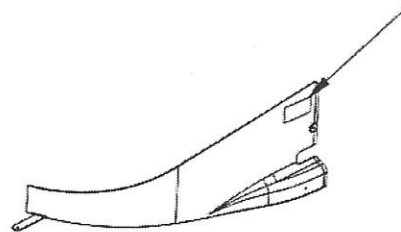
- Rear wing side 77 11 163 120 / 121
- (1 disc).



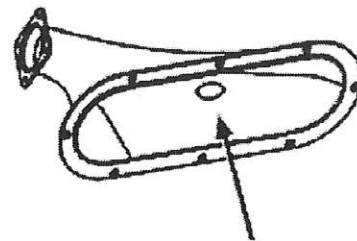
- Front cover 77 11 163 091
- (1 disc).



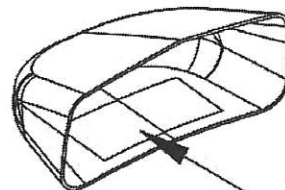
- Barge board 77 11 163 092 / 093
- (1 disc).



- Air box 77 11 154 845
- (1 disc).



- Nose end 77 11 163 070
- (1 disc)



- Intake air engine 77 11 154 846
- (1 disc).



